



GAT MONTHLY MEMBERSHIP PROGRESS REPORT

Results as of: 11/30/2022

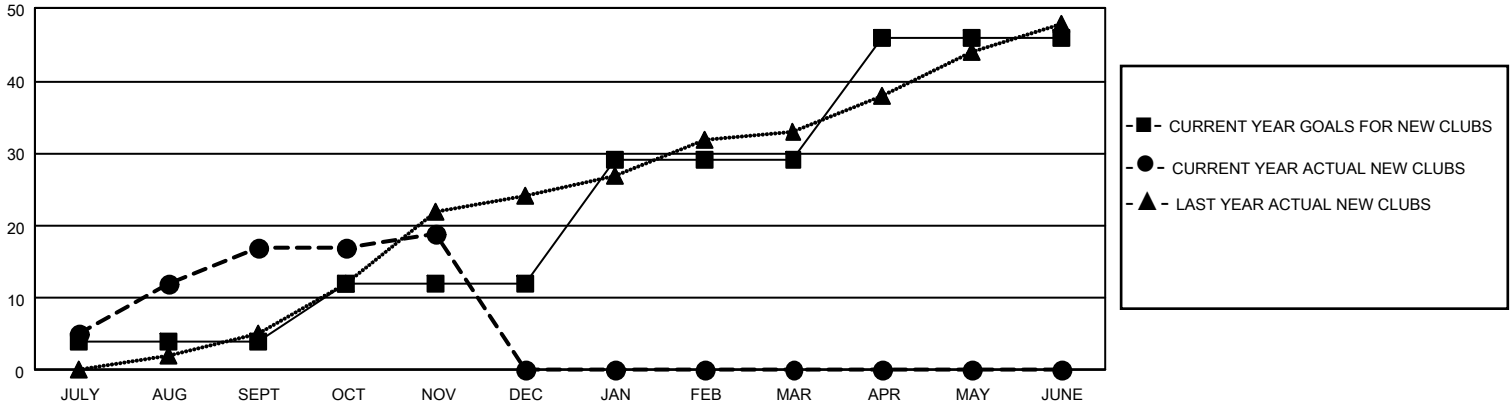
GAT Constitutional Area 7

REPORT DOES NOT INCLUDE CLUBS IN UNDISTRICTED AREAS.

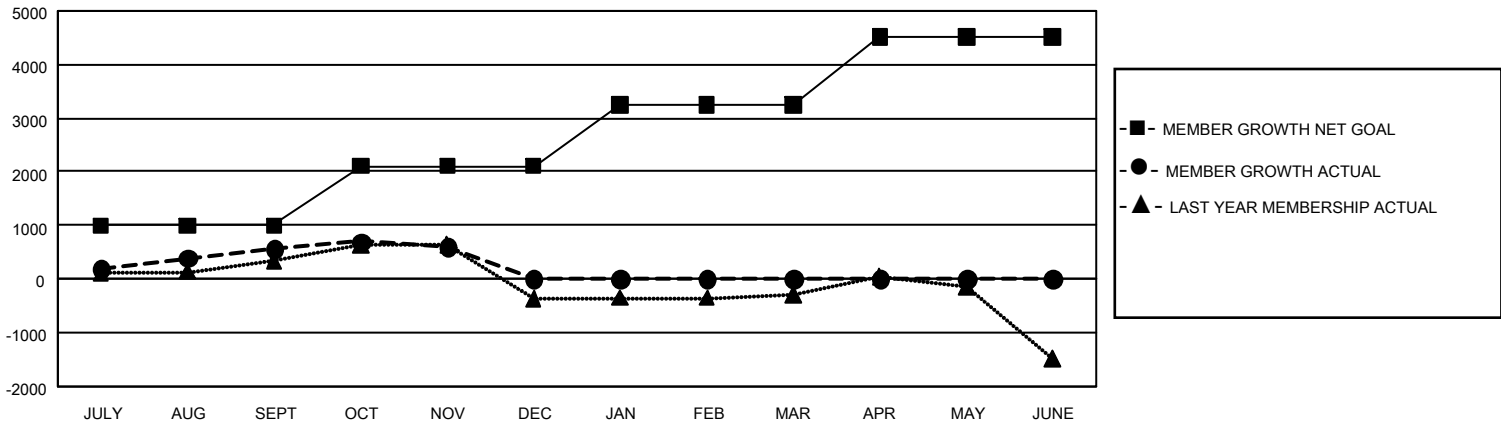
Clubs			
RESULTS FOR 2022-2023			
QUARTER	NEW CLUB GOAL	NEW CLUBS	DROPPED CLUBS
JULY/AUG/SEPT	12	17	13
OCT/NOV/DEC	24	2	3
JAN/FEB/MAR	51	0	0
APR/MAY/JUNE	51	0	0

Members			
RESULTS FOR 2022-2023			
QUARTER	MEMBER GROWTH NET GOAL	MEMBER GROWTH ACTUAL	DROPPED MEMBERS ACTUAL (including transfers)
JULY/AUG/SEPT	996	1,894	990
OCT/NOV/DEC	1105	906	780
JAN/FEB/MAR	1149	0	0
APR/MAY/JUNE	1270	0	0

GOALS AND ACTUAL NEW CLUBS CUMULATIVE



GOALS AND ACTUAL MEMBERS CUMULATIVE



DROPPED CLUBS: 16	
DROPPED MEMBERS	
DECEASED	236
CLUB CANCELLED	0
OTHER	1,538
TOTAL	1,774

753 CLUBS OF 1,862 ADDED 1 OR MORE NEW MEMBERS

[CLICK HERE FOR CUMULATIVE MEMBERSHIP DATA](#)

GENDER DISTRIBUTION	
MALE	24,850 (58.10%)
FEMALE	17,907 (41.87%)
NON BINARY	5 (0.01%)
PREFER NOT TO ANSWER	9 (0.02%)
TOTAL FAMILY UNIT MEMBERS	7,411
FAMILY MEMBERS PAYING HALF DUES	4,019